





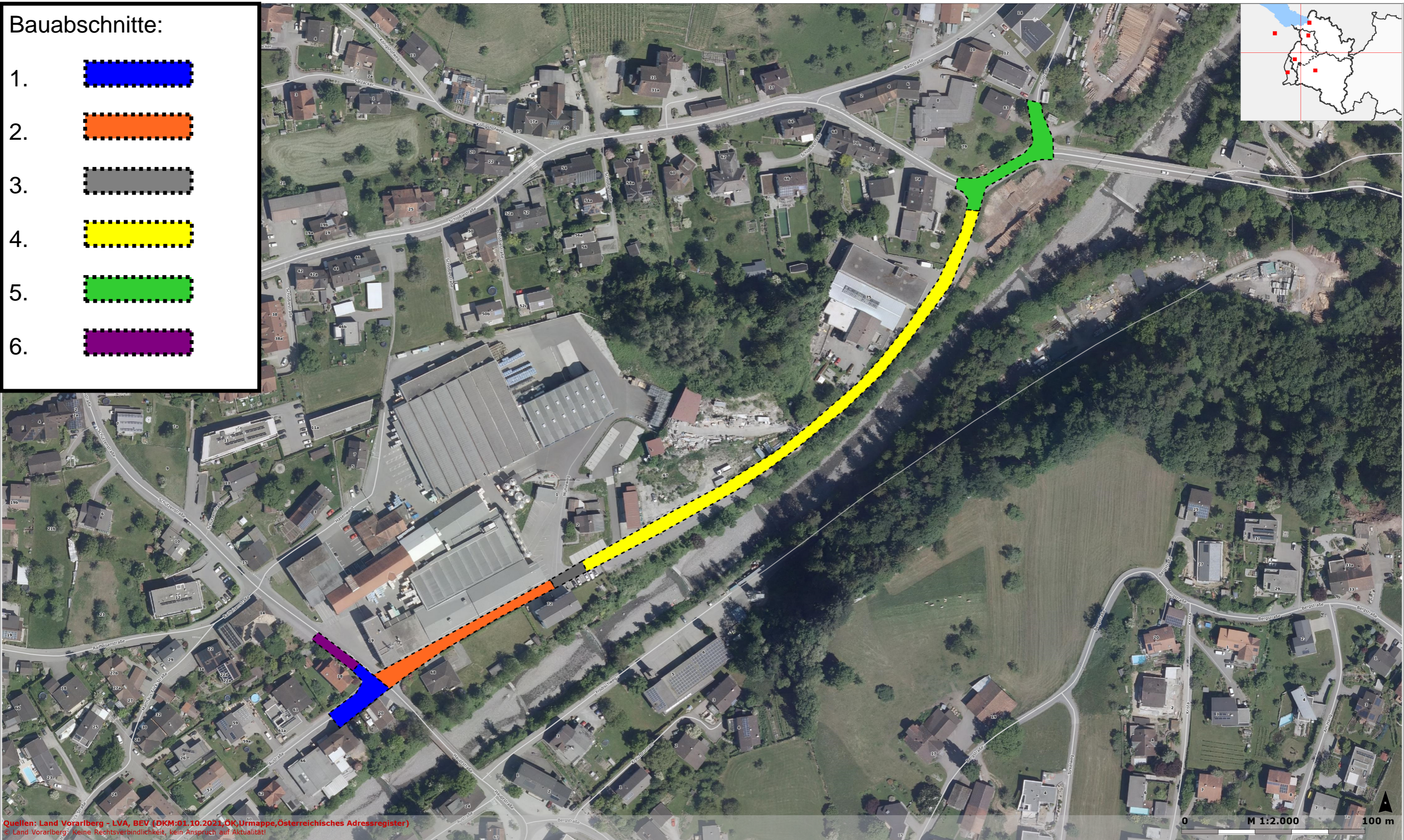


Bauabschnitte:

- 1. 
- 2. 
- 3. 
- 4. 
- 5. 
- 6. 



Quellen: Land Vorarlberg - LVA, BEV (DKM:01.10.2021, ÖK, Urmappe, Österreichisches Adressregister)  
© Land Vorarlberg - keine Rechtsverbindlichkeit, kein Anspruch auf Aktualität!